



RECEIVED

SEP 12 2008

PUBLIC SERVICE
COMMISSION

Stephanie L. Stumbo
Executive Director
Kentucky Public Service Commission
211 Sower Boulevard
Frankfort, Kentucky 40602-0615

Louisville Gas and
Electric Company
State Regulation and Rates
220 West Main Street
PO Box 32010
Louisville, Kentucky 40232
www.eon-us.com

Robert M. Conroy
Director - Rates
T 502-627-3324
F 502-627-3213
robert.conroy@eon-us.com

September 12, 2008

**RE: AN EXAMINATION OF THE APPLICATION OF THE
FUEL ADJUSTMENT CLAUSE OF LOUISVILLE GAS
AND ELECTRIC COMPANY FROM NOVEMBER 1,
2007 THROUGH APRIL 30, 2008 - CASE NO. 2008-00286**

Dear Ms. Stumbo:

Enclosed please find an original and five (5) copies of the Response of Louisville Gas and Electric Company to Information Requested in Appendix A of the Commission's Order dated August 22, 2008, in the above-referenced proceeding.

Also enclosed are an original and ten (10) copies of a Petition for Confidential Protection regarding information provided in response to Question No. 10.

Please contact me if you have any questions concerning this filing.

Sincerely,

Robert M. Conroy

Enclosures

VERIFICATION

STATE OF KENTUCKY)
) SS:
COUNTY OF JEFFERSON)

The undersigned, **Ralph Bowling**, being duly sworn, deposes and says that he is the Vice President, Power Production for E.ON U.S. Services Inc., that he has personal knowledge of the matters set forth in the responses for which he is identified as the witness, and the answers contained therein are true and correct to the best of his information, knowledge and belief.



RALPH BOWLING

Subscribed and sworn to before me, a Notary Public in and before said County and State, this 9th day of September, 2008.

 (SEAL)

Notary Public

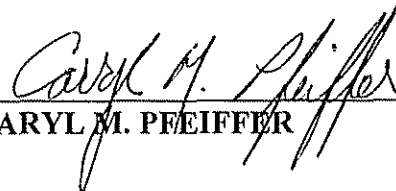
My Commission Expires:

August 5, 2012

VERIFICATION

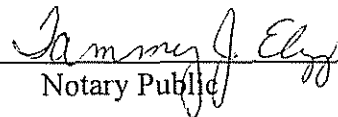
STATE OF KENTUCKY)
) SS:
COUNTY OF JEFFERSON)

The undersigned, **Caryl M. Pfeiffer**, being duly sworn, deposes and says that she is the Director Corporate Fuels and By-Products, for Kentucky Utilities Company, that she has personal knowledge of the matters set forth in the responses for which she is identified as the witness, and the answers contained therein are true and correct to the best of her information, knowledge and belief.



CARYL M. PFEIFFER

Subscribed and sworn to before me, a Notary Public in and before said County and State, this 12th day of September, 2008.

 (SEAL)

Notary Public

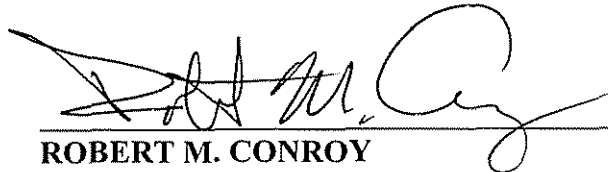
My Commission Expires:

November 9, 2010

VERIFICATION

STATE OF KENTUCKY)
) SS:
COUNTY OF JEFFERSON)

The undersigned, **Robert M. Conroy**, being duly sworn, deposes and says that he is the Director of Rates for E.ON U.S. Services Inc., that he has personal knowledge of the matters set forth in the responses for which he is identified as the witness, and the answers contained therein are true and correct to the best of his information, knowledge and belief.



ROBERT M. CONROY

Subscribed and sworn to before me, a Notary Public in and before said County and State, this 12th day of September, 2008.

 (SEAL)

Notary Public

My Commission Expires:

November 9, 2010

COMMONWEALTH OF KENTUCKY
BEFORE THE PUBLIC SERVICE COMMISSION

In the Matter of:

AN EXAMINATION OF THE APPLICATION)
OF THE FUEL ADJUSTMENT CLAUSE OF)
LOUISVILLE GAS AND ELECTRIC) CASE NO. 2008-00286
COMPANY FROM NOVEMBER 1, 2007)
THROUGH APRIL 30, 2008)

RESPONSE OF
LOUISVILLE GAS AND ELECTRIC COMPANY
TO
INFORMATION REQUESTED IN
APPENDIX A OF COMMISSION'S ORDER
DATED AUGUST 22, 2008

FILED: September 12, 2008

LOUISVILLE GAS AND ELECTRIC COMPANY

**Response to Information Requested in Appendix A of
Commission's Order Dated August 22, 2008**

Case No. 2008-00286

Question No. 1

Witness: Caryl M. Pfeiffer

Q-1. For the period from November 1, 2007 through April 30, 2008, list each vendor from whom coal was purchased and the quantities and the nature of each purchase (e.g., spot or contract).

A-1. PURCHASE <u>VENDOR</u>	<u>PURCHASE TONNAGE</u>	<u>TYPE</u>
Alliance	1,755,947	Contract
Charolais Coal	15,372	Contract
Coal Network	38,314	Spot
Consol	220,896	Contract
Emerald International	23,522	Contract
Marietta Coal Company	24,785	Contract
Marietta Coal Company	8,263	Spot
Patriot Coal Company	279,414	Contract
Peabody Coal Sales	567,241	Contract
Peabody Coal Sales	198,574	Spot
Pleasant View Mining	32,859	Spot
Synthetic American Fuel	39,058	Contract
Sands Hill Coal Company	8,305	Contract
Smoky Mountain Coal	95,652	Contract
Smoky Mountain Coal	148,972	Spot
Synfuel Solutions Operating	182,730	Contract
TOTAL	<u>3,639,904</u>	

LOUISVILLE GAS AND ELECTRIC COMPANY

**Response to Information Requested in Appendix A of
Commission's Order Dated August 22, 2008**

Case No. 2008-00286

Question No. 2

Witness: Ralph Bowling/Caryl M. Pfeiffer

Q-2. For each generating station or unit for which a separate coal pile is maintained, state for the period from November 1, 2007 through April 30, 2008 the actual amount of coal burned in tons, the actual amount of coal deliveries in tons, the total kWh generated, and the actual capacity factor at which the plant operated.

A-2. For November 1, 2007 to April 30, 2008

The North American Electric Reliability Council Generation Availability Data System defines Capacity Factor as the value equal to the Net MWH produced divided by the product of the hours in the period times the unit rating.

Plant	Coal Burn (Tons)	Coal Receipts (Tons)	Net MWH	Capacity Factor (Net MWH/ period hrs x MW rating)
Cane Run 4-6	744,096	749,239	1,584,986	64.5%
Mill Creek 1-4	2,322,775	2,210,388	4,980,221	76.5%
Trimble County 1	810,739	680,277	1,851,259	82.3%

LOUISVILLE GAS AND ELECTRIC COMPANY

**Response to Information Requested in Appendix A of
Commission's Order Dated August 22, 2008**

Case No. 2008-00286

Question No. 3

Witness: Ralph Bowling

Q-3. List all firm power commitments for LG&E from November 1, 2007 through April 30, 2008 for (a) purchases and (b) sales. This list shall identify the electric utility, the amount of commitment in MW, and the purpose of the commitment (e.g., peaking, emergency).

A-3. a. Firm Purchases

The firm purchases from Ohio Valley Electric Corporation (OVEC) for the review period are shown in the table below. LG&E purchased its participation ratio (5.63%) of the OVEC released capacity for the months in question.

Utility	Companies' LG&E Portion		Purpose
	Amt (MW)	(MW)	
OVEC (Nov 2007)	~ 155	~ 107	Baseload
OVEC (Dec 2007)	~ 175	~ 121	Baseload
OVEC (Jan 2008)	~ 175	~ 121	Baseload
OVEC (Feb 2008)	~ 181	~ 125	Baseload
OVEC (Mar 2008)	~ 156	~ 108	Baseload
OVEC (Apr 2008)	~ 160	~ 111	Baseload

b. Sales

None.

LOUISVILLE GAS AND ELECTRIC COMPANY

**Response to Information Requested in Appendix A of
Commission's Order Dated August 22, 2008**

Case No. 2008-00286

Question No. 4

Witness: Robert M. Conroy

Q-4. Provide a monthly billing summary for sales to all electric utilities for the period November 1, 2007 through April 30, 2008.

A-4. Please see the attached sheets.

Louisville Gas and Electric Company

POWER TRANSACTION SCHEDULE

Month Ended: November 30, 2007

Company	Type of Transaction	KWH	Billing Components			Total Charges(\$)
			Demand(\$)	Fuel Charges(\$)	Other Charges(\$)	
Sales						
MIDWEST INDEPENDENT TRANSMISSION SYSTEM OPERATOR, INC.	MISO	Economy	9,744,000	285,611.59	139,340.57	424,952.16
MIDWEST CONTINGENCY RESERVE SHARING GROUP	MCRS	Economy	626,000	43,227.73	21,089.39	64,317.12
PJM INTERCONNECTION ASSOCIATION	PJM	Economy	27,960,000	801,043.93	390,803.18	1,191,847.11
ASSOCIATED ELECT COOPERATIVE	AECI	Economy	2,478,000	66,153.20	32,273.98	98,427.18
AMERICAN ELECTRIC POWER SERVICE CORP.	AEP	Economy	4,088,000	117,864.76	57,502.37	175,367.13
CARGILL- ALLIANT, LLC	CARG	Economy	2,203,000	64,676.14	31,553.38	96,229.52
CITIGROUP ENERGY, INC.	CITI	Economy	1,522,000	40,776.25	19,893.40	60,669.65
COBB ELECTRIC MEMBERSHIP CORPORATION	COBB	Economy	323,000	8,872.48	4,328.60	13,201.08
CONSTELLATION ENERGY COMDS. GRP. INC.	CONS	Economy	2,857,000	77,217.58	37,671.95	114,889.53
DTE ENERGY TRADING, INC.	DTE	Economy	911,000	26,094.74	12,730.77	38,825.51
EAST KENTUCKY POWER COOPERATIVE	EKPC	Economy	1,404,000	48,838.20	23,826.56	72,664.76
FORTIS ENERGY MARKETING & TRADING GP	FORT	Economy	862,000	24,650.07	12,025.96	36,676.03
ILLINOIS MUNICIPAL ELECTRIC AGENCY	IMEA	Economy	4,820,000	199,226.46	97,196.08	296,422.54
INDIANA MUNICIPAL POWER AGENCY	IMPA	Economy	4,820,000	23,105.18	11,272.27	34,377.45
MERRILL LYNCH COMMODITIES INC.	MLCM	Economy	936,000	28,354.36	13,833.17	42,187.53
SEMPRA ENERGY TRADING CORP.	SEMP	Economy	394,000	13,071.70	6,377.25	19,448.95
THE ENERGY AUTHORITY	TEA	Economy	339,000	9,518.81	4,643.92	14,162.73
TENNESSEE VALLEY AUTHORITY	TVA	Economy	29,830,000	807,943.76	394,169.37	1,202,113.13
MISCELLANEOUS			.	245.84	(245.84)	-
KENTUCKY UTILITIES COMPANY	KU	Economy	364,089,000	6,696,698.20	982.12	6,697,680.32
SUBTOTAL			460,206,000	0.00	9,383,190.98	10,694,459.43
TOTAL			460,206,000	-	9,383,190.98	10,694,459.43

Louisville Gas and Electric Company

POWER TRANSACTION SCHEDULE

Month Ended: December 31, 2007

Company	Type of Transaction	KWH	Billing Components			Total Charges(\$)
			Demand(\$)	Fuel Charges(\$)	Other Charges(\$)	
<u>Sales</u>						
MIDWEST INDEPENDENT TRANSMISSION SYSTEM OPERATOR, INC.	MISO	Economy		618,259.62	525,607.77	1,143,867.39
MIDWEST CONTINGENCY RESERVE SHARING GROUP	MCRS	Economy		34,270.63	29,091.50	63,362.13
PJM INTERCONNECTION ASSOCIATION	PJM	Economy		1,767,238.98	1,500,166.03	3,267,405.01
ASSOCIATED ELECT COOPERATIVE	AECI	Economy		528,585.29	448,703.15	977,288.44
AMERICAN ELECTRIC POWER SERVICE CORP.	AEP	Economy		256,113.30	217,408.34	473,521.64
CARGILL- ALLIANT, LLC	CARG	Economy		130,909.31	111,125.72	242,035.03
CITIGROUP ENERGY, INC.	CITI	Economy		1,661.33	1,410.25	3,071.58
COBB ELECTRIC MEMBERSHIP CORPORATION	COBB	Economy		69,649.50	59,123.77	128,773.27
CONSTELLATION ENERGY COMDS. GRP. INC.	CONS	Economy		232,565.66	197,419.32	429,984.98
DTE ENERGY TRADING, INC.	DTE	Economy		20,734.70	17,601.18	38,335.88
EAST KENTUCKY POWER COOPERATIVE	EKPC	Economy		6,473,000	161,598.56	351,712.24
FORTIS ENERGY MARKETING & TRADING GP	FORT	Economy		1,273,000	30,558.17	66,556.58
ILLINOIS MUNICIPAL ELECTRIC AGENCY	IMEA	Economy		1,109,000	36,713.19	67,878.13
INDIANA MUNICIPAL POWER AGENCY	IMPA	Economy		1,847,000	320,023.51	383,678.62
MERRILL LYNCH COMMODITIES INC.	MLCM	Economy		1,510,000	45,842.21	99,845.66
SEMPRA ENERGY TRADING CORP.	SEMP	Economy		2,020,000	64,920.62	141,398.98
THE ENERGY AUTHORITY	TEA	Economy		281,000	9,253.38	17,108.34
TENNESSEE VALLEY AUTHORITY	TVA	Economy		29,381,000	713,027.01	1,318,298.22
WESTAR ENERGY, INC.	WSTR	Economy		467,000	13,616.58	25,175.35
MISCELLANEOUS				(7,674.05)	7,674.05	-
KENTUCKY UTILITIES COMPANY	KU	Economy		511,121,000	8,909,854.07	8,909,865.00
SUBTOTAL				710,540,000	0.00	13,755,027.51
TOTAL				710,540,000	-	13,755,027.51
						4,394,134.96
						18,149,162.47

Louisville Gas and Electric Company

POWER TRANSACTION SCHEDULE

Month Ended: January 31, 2008

Company	Type of Transaction	KWH	Billing Components			Total Charges(\$)
			Demand(\$)	Fuel Charges(\$)	Other Charges(\$)	
<u>Sales</u>						
MIDWEST INDEPENDENT TRANSMISSION SYSTEM OPERATOR, INC.	MISO	Economy	93,265,000	2,382,324.05	1,514,301.88	3,896,625.93
MIDWEST CONTINGENCY RESERVE SHARING GROUP	MCRS	Economy	333,000	22,060.13	14,021.64	36,081.77
PJM INTERCONNECTION ASSOCIATION	PJM	Economy	77,756,000	1,960,077.58	1,245,944.41	3,206,021.99
ASSOCIATED ELECT COOPERATIVE	AECI	Economy	3,738,000	96,062.76	61,058.51	157,121.27
AMERICAN ELECTRIC POWER SERVICE CORP.	AEP	Economy	6,364,000	189,491.96	120,443.10	309,935.06
CARGILL- ALLIANT, LLC	CARG	Economy	4,400,000	133,907.09	85,112.76	219,019.85
CITIGROUP ENERGY, INC.	CITI	Economy	244,000	7,388.18	4,696.01	12,084.19
COBB ELECTRIC MEMBERSHIP CORPORATION	COBB	Economy	2,125,000	62,119.74	39,483.96	101,603.70
CONSTELLATION ENERGY COMDS. GRP. INC.	CONS	Economy	3,109,000	73,926.74	46,895.45	120,822.19
DTE ENERGY TRADING, INC.	DTE	Economy	190,000	6,498.08	4,130.25	10,628.33
DUKE ENERGY CAROLINAS, LLC	DECA	Economy	428,000	11,721.41	7,450.26	19,171.67
EAST KENTUCKY POWER COOPERATIVE	EKPC	Economy	2,547,000	104,761.47	66,587.50	171,348.97
FORTIS ENERGY MARKETING & TRADING GP	FORT	Economy	904,000	32,467.33	20,636.58	53,103.91
ILLINOIS MUNICIPAL ELECTRIC AGENCY	IMEA	Economy	601,000	23,102.76	14,684.35	37,787.11
INDIANA MUNICIPAL POWER AGENCY	IMPA	Economy	789,000	28,547.59	18,145.16	46,692.75
KANSAS CITY POWER & LIGHT	KCPL	Economy	190,000	4,636.08	2,946.73	7,582.81
MERRILL LYNCH COMMODITIES INC.	MLCM	Economy	837,000	21,656.73	13,765.24	35,421.97
THE ENERGY AUTHORITY	TEA	Economy	202,000	4,402.11	2,798.02	7,200.13
TRANSALTA ENERGY MARKETING (U.S.) INC.	TALT	Economy	764,000	18,809.91	11,955.79	30,765.70
TENNESSEE VALLEY AUTHORITY	TVA	Economy	17,582,000	499,397.44	317,422.30	816,819.74
WESTAR ENERGY, INC.	WSTR	Economy	48,000	936.36	595.20	1,531.56
MISCELLANEOUS			-	(14.92)	14.92	-
KENTUCKY UTILITIES COMPANY	KU	Economy	541,939,000	10,770,545.12	-	10,770,545.12
SUBTOTAL			758,355,000	0.00	16,454,825.70	20,067,915.72
TOTAL			758,355,000	-	16,454,825.70	20,067,915.72

Louisville Gas and Electric Company

POWER TRANSACTION SCHEDULE

Month Ended: February 29, 2008

Company	Type of Transaction	KWH	Billing Components			Total Charges(\$)
			Demand(\$)	Fuel Charges(\$)	Other Charges(\$)	
Sales						
MIDWEST INDEPENDENT TRANSMISSION SYSTEM OPERATOR, INC.	MISO	Economy	32,770,000	900,570.39	682,601.46	1,583,171.85
MIDWEST CONTINGENCY RESERVE SHARING GROUP	MCRS	Economy	183,000	10,780.96	8,171.60	18,952.56
PJM INTERCONNECTION ASSOCIATION	PJM	Economy	45,685,000	1,168,583.85	885,746.47	2,054,330.32
ASSOCIATED ELECT COOPERATIVE	AECI	Economy	3,067,000	78,757.43	59,695.44	138,452.87
AMERICAN ELECTRIC POWER SERVICE CORP.	AEP	Economy	1,113,000	26,269.71	19,911.55	46,181.26
AMEREN ENERGY MARKETING COMPANY	AMEM	Economy	148,000	4,265.68	3,233.23	7,498.91
CARGILL- ALLIANT, LLC	CARG	Economy	1,293,000	33,506.58	25,396.83	58,903.41
CITIGROUP ENERGY, INC.	CITI	Economy	151,000	4,608.95	3,493.43	8,102.38
COBB ELECTRIC MEMBERSHIP CORPORATION	COBB	Economy	599,000	14,836.50	11,245.55	26,082.05
CONSTELLATION ENERGY COMDS. GRP. INC.	CONS	Economy	687,000	15,943.84	12,084.89	28,028.73
DTE ENERGY TRADING, INC.	DTE	Economy	90,000	1,789.77	1,356.59	3,146.36
EAST KENTUCKY POWER COOPERATIVE	EKPC	Economy	346,000	12,001.72	9,096.89	21,098.61
FORTIS ENERGY MARKETING & TRADING GP	FORT	Economy	1,063,000	24,234.36	18,368.81	42,603.17
ILLINOIS MUNICIPAL ELECTRIC AGENCY	IMEA	Economy	82,000	2,347.04	1,778.97	4,126.01
INDIANA MUNICIPAL POWER AGENCY	IMPA	Economy	87,000	2,463.34	1,867.12	4,330.46
THE ENERGY AUTHORITY	TEA	Economy	63,000	1,432.94	1,086.13	2,519.07
TENNESSEE VALLEY AUTHORITY	TVA	Economy	3,908,000	108,582.65	82,301.93	190,884.58
WESTAR ENERGY, INC.	WSTR	Economy	99,000	3,882.11	2,942.47	6,824.58
MISCELLANEOUS			-	726.71	(726.71)	-
KENTUCKY UTILITIES COMPANY	KU	Economy	359,434,000	7,525,413.70	-	7,525,413.70
SUBTOTAL			450,868,000	0.00	9,940,998.23	1,829,652.65
TOTAL			450,868,000	-	9,940,998.23	1,829,652.65

Louisville Gas and Electric Company

POWER TRANSACTION SCHEDULE

Month Ended: March 31, 2008

Company	Type of Transaction	KWH	Billing Components			Total Charges(\$)
			Demand(\$)	Fuel Charges(\$)	Other Charges(\$)	
Sales						
MIDWEST INDEPENDENT TRANSMISSION SYSTEM OPERATOR, INC.	MISO	Economy		1,640,678.70	1,135,071.74	2,775,750.44
MIDWEST CONTINGENCY RESERVE SHARING GROUP	MCRS	Economy		37,646.51	26,045.01	63,691.52
PJM INTERCONNECTION ASSOCIATION	PJM	Economy		1,784,766.51	1,234,756.10	3,019,522.61
ASSOCIATED ELECT COOPERATIVE	AECI	Economy		147,456.58	102,014.97	249,471.55
AMERICAN ELECTRIC POWER SERVICE CORP.	AEP	Economy		35,495.89	24,557.14	60,053.03
AMEREN ENERGY MARKETING COMPANY	AMEM	Economy		4,784.21	3,309.87	8,094.08
CARGILL- ALLIANT, LLC	CARG	Economy		113,447.53	78,486.47	191,934.00
CITIGROUP ENERGY, INC.	CITI	Economy		33,074.93	22,882.24	55,957.17
COBB ELECTRIC MEMBERSHIP CORPORATION	COBB	Economy		47,277.27	32,707.87	79,985.14
CONSTELLATION ENERGY COMDS. GRP. INC.	CONS	Economy		33,686.46	23,305.34	56,991.80
EAST KENTUCKY POWER COOPERATIVE	EKPC	Economy		62,023.78	42,909.95	104,933.73
FORTIS ENERGY MARKETING & TRADING GP	FORT	Economy		20,419.13	14,126.57	34,545.70
ILLINOIS MUNICIPAL ELECTRIC AGENCY	IMEA	Economy		391,719.37	271,003.46	662,722.83
INDIANA MUNICIPAL POWER AGENCY	IMPA	Economy		538,054.00	372,242.23	910,296.23
THE ENERGY AUTHORITY	TEA	Economy		32,252.67	22,313.39	54,566.06
TENNESSEE VALLEY AUTHORITY	TVA	Economy		516,766.96	357,515.19	874,282.15
MISCELLANEOUS				(18.83)	18.83	-
KENTUCKY UTILITIES COMPANY	KU	Economy		8,554,456.05	7,865.27	8,562,321.32
SUBTOTAL				0.00	13,993,987.72	17,765,119.36
TOTAL					13,993,987.72	17,765,119.36

Louisville Gas and Electric Company

POWER TRANSACTION SCHEDULE

Month Ended: April 30, 2008

Company	Type of Transaction	KWH	Billing Components			Total Charges(\$)
			Demand(\$)	Fuel Charges(\$)	Other Charges(\$)	
<u>Sales</u>						
MIDWEST INDEPENDENT TRANSMISSION SYSTEM OPERATOR, INC.	MISO	Economy	25,709,000	720,862.94	657,689.22	1,378,552.16
MIDWEST CONTINGENCY RESERVE SHARING GROUP	MCRS	Economy	225,000	12,131.95	11,533.49	23,665.44
PJM INTERCONNECTION ASSOCIATION	PJM	Economy	53,305,000	\$1,439,208.31	1,306,461.09	\$2,745,669.40
ASSOCIATED ELECT COOPERATIVE	AECI	Economy	1,657,000	53,678.49	48,747.83	102,426.32
AMERICAN ELECTRIC POWER SERVICE CORP.	AEP	Economy	1,298,000	36,660.91	33,293.40	69,954.31
AMEREN ENERGY MARKETING COMPANY	AMEM	Economy	251,000	10,386.16	9,432.15	19,818.31
CARGILL- ALLIANT, LLC	CARG	Economy	2,916,000	92,664.02	84,152.34	176,816.36
CITIGROUP ENERGY, INC.	CITI	Economy	709,000	24,298.97	22,066.98	46,365.95
COBB ELECTRIC MEMBERSHIP CORPORATION	COBB	Economy	989,000	\$26,466.66	24,035.54	\$50,502.20
CONSTELLATION ENERGY COMDS. GRP. INC.	CONS	Economy	1,539,000	50,128.05	45,523.50	95,651.55
DUKE ENERGY CAROLINAS, LLC	DECA	Economy	3,224,000	73,153.62	66,434.07	139,587.69
EAST KENTUCKY POWER COOPERATIVE	EKPC	Economy	637,000	24,876.59	22,591.54	47,468.13
FORTIS ENERGY MARKETING & TRADING GP	FORT	Economy	1,030,000	33,573.46	30,489.55	64,063.01
ILLINOIS MUNICIPAL ELECTRIC AGENCY	IMEA	Economy	168,000	9,970.67	9,054.79	19,025.46
INDIANA MUNICIPAL POWER AGENCY	IMPA	Economy	260,000	14,880.03	13,513.21	28,393.24
THE ENERGY AUTHORITY	TEA	Economy	1,382,000	29,516.30	26,805.08	56,321.38
TENNESSEE VALLEY AUTHORITY	TVA	Economy	11,890,000	284,222.99	258,115.55	542,338.54
WESTAR ENERGY, INC.	WSTR	Economy	356,000	11,351.73	10,308.96	21,660.69
MISCELLANEOUS			.	1,492.91	(1,492.91)	-
KENTUCKY UTILITIES COMPANY	KU	Economy	350,222,000	6,667,782.60	499.60	6,668,282.20
SUBTOTAL			457,767,000	0.00	9,617,307.36	12,296,562.34
TOTAL			457,767,000	-	9,617,307.36	12,296,562.34

LOUISVILLE GAS AND ELECTRIC COMPANY

**Response to Information Requested in Appendix A of
Commission's Order Dated August 22, 2008**

Case No. 2008-00286

Question No. 5

Witness: Ralph Bowling

Q-5. List LG&E's scheduled, actual, and forced outages between November 1, 2007 through April 30, 2008.

A-5. Please see the attached sheets.

Louisville Gas & Electric Company
 Cane Run Unit #4 - Coal - 155 MW
 November 2007 through April 2008

Schedule vs Actual

MONTH	MAINTENANCE				HOURS OF DURATION			REASON FOR DEVIATION FROM SCHEDULED MAINTENANCE OR REASON FOR FORCED OUTAGE AS APPROPRIATE
	Scheduled		Actual		Scheduled	Forced	Actual	
	FROM	TO	FROM	TO				
November	No Outages > or = 6 Hours							
December	S	9/29/2007 0:00	10/7/2007 15:00	12/1/2007 0:49	12/11/2007 0:06	207:00	239:17	Boiler feed pump overhaul (Notice: scheduled in prior 6 mos. FAC; postponed for actual outage)
	S	12/23/2007 0:24	12/24/2007 3:26	12/23/2007 0:24	12/24/2007 3:26	27:02	27:02	Reheater boiler tube failure
	S	12/26/2007 9:42	12/27/2007 15:08	12/26/2007 9:42	12/27/2007 15:08	29:26	29:26	Reheater boiler tube failure
January	F			1/25/2008 10:59	1/27/2008 19:29	56:30		Waterwall boiler tube failure
February	No Outages > or = 6 Hours							
March	F			3/19/2008 19:47	3/22/2008 11:28	63:41		Waterwall boiler tube failure
	F			3/25/2008 6:09	3/26/2008 11:20	29:11		Waterwall boiler tube failure
	F			3/29/2008 19:46	—————>	52:14		Waterwall boiler tube failure
April	F			—————>	4/1/2008 7:23	7:23		" " " "
	S	4/11/2008 23:21	4/13/2008 14:16	4/11/2008 23:21	4/13/2008 14:16	38:55	38:55	Scrubber mist eliminators
	F			4/23/2008 8:38	4/25/2008 9:22	48:44		Waterwall boiler tube failure

Schedule vs Actual

MONTH	MAINTENANCE				HOURS OF DURATION			REASON FOR DEVIATION FROM SCHEDULED MAINTENANCE OR REASON FOR FORCED OUTAGE AS APPROPRIATE	
	Scheduled		Actual		Scheduled	Forced	Actual		
	FROM	TO	FROM	TO					
November	F		→	11/3/2007 2:05	50:05		Secondary reheater boiler tube failure		
	F			11/5/2007 9:00	11/6/2007 5:20	20:20	Second superheater boiler tube failure		
	F			11/16/2007 8:17	11/18/2007 5:06	44:49	Superheater boiler tube failure		
	F			11/24/2007 9:31	11/25/2007 2:57	17:26	Waterwall boiler tube failure		
December	No Outages > or = 6 Hours								
January	F			1/20/2008 19:36	1/22/2008 15:13	43:37	Superheater boiler tube failure		
	F			1/23/2008 9:28	1/24/2008 13:28	28:00	Superheater boiler tube failure		
	F			1/25/2008 4:15	1/27/2008 3:00	46:45	Superheater boiler tube failure		
February	S	2/2/2008 0:00	→	2/2/2008 1:39	→	672:00	670:21	Major turbine overhaul	
March	S	→		3/30/2008 15:00	→	3/23/2008 5:26	711:00	533:26	" " "
	S	3/23/2008 9:14		3/24/2008 15:41	3/23/2008 9:14	3/24/2008 15:41	30:27	30:27	Balance shot for generator following major turbine outage
	S	3/24/2008 16:16		3/26/2008 7:51	3/24/2008 16:16	3/26/2008 7:51	39:35	39:35	Balance shot for generator following major turbine outage
April	S	4/17/2008 23:58		4/21/2008 1:47	4/17/2008 23:58	4/21/2008 1:47	73:49	73:49	Post outage main stop valve screen removal
	F			4/21/2008 3:15	4/21/2008 9:29	6:14			Unit would not transfer to governor valves due to speed changer inadvertently being locked after overspeed test

Louisville Gas & Electric Company
 Cane Run Unit #6 - Coal - 240 MW
 November 2007 through April 2008

Schedule vs Actual

MONTH	MAINTENANCE				HOURS OF DURATION			REASON FOR DEVIATION FROM SCHEDULED MAINTENANCE OR REASON FOR FORCED OUTAGE AS APPROPRIATE
	Scheduled		Actual		Scheduled	Forced	Actual	
	FROM	TO	FROM	TO				
November	F		11/16/2007 11:04	11/17/2007 10:37	23:33			Incorrect wire disconnected on sync check relay
	F		11/24/2007 13:51	11/27/2007 1:08	59:17			Secondary reheat boiler tube failure
December	F		12/14/2007 12:26	12/15/2007 15:00	26:34			Condenser tube leak
	S	12/15/2007 15:00	12/16/2007 19:57	12/15/2007 15:00	12/16/2007 19:57	28:57	28:57	Air heater wash
	F		12/18/2007 4:00	12/20/2007 0:02	44:02			Pulvenzer mills
	S	12/28/2007 22:08	12/30/2007 10:04	12/28/2007 22:08	12/30/2007 10:04	35:56	35:56	Ignitor repairs
	F		12/31/2007 10:24	12/31/07 22:48	12:24			Boiler feed pump suction line leak repaired
January	S	1/11/2008 23:52	1/17/2008 8:52	1/11/2008 23:52	1/17/2008 8:52	129:00	129:00	Bumer repairs
February	S	2/22/2008 23:45	2/26/2008 6:32	2/22/2008 23:45	2/26/2008 6:32	78:47	78:47	Air heater wash
	F		2/27/2008 2:30	2/28/2008 3:07	24:37			Blowdown tandem drain valve crack repaired
March	F		3/9/2008 8:10	3/10/2008 2:39	18:29			Waterwall boiler tube failure
	F		3/27/2008 5:27	3/28/2008 23:00	41:33			Superheater boiler tube failure
	S	3/29/2008 0:00	—————>	3/28/2008 23:00	—————>	72:00	73:00	Air heater seal replacement
April	S	—————>	4/6/2008 15:00	—————>	4/4/2008 23:27	135:00	95:27	" " " "
	F		4/5/2008 0:32	4/14/2008 11:40	227:08			HP turbine bearing high temps
	F		4/27/2008 2:23	4/29/2008 14:30	60:07			Waterwall boiler tube failure

Louisville Gas & Electric Company
 Mill Creek Unit #1 - Coal - 303 MW
 November 2007 through April 2008

Schedule vs Actual

MONTH	MAINTENANCE				HOURS OF DURATION			REASON FOR DEVIATION FROM SCHEDULED MAINTENANCE OR REASON FOR FORCED OUTAGE AS APPROPRIATE
	Scheduled		Actual		Scheduled	Forced	Actual	
	FROM	TO	FROM	TO				
November	F			11/2/2007 23:26	11/4/2007 3:24		27:58	Reheater boiler tube failure
December	S	12/21/2007 22:31	12/22/2007 21:23	12/21/2007 22:31	12/22/2007 21:23	22:52	22:52	High back pressure - cleaned condenser
January	S	1/13/2008 0:43	1/13/2008 14:17	1/13/2008 0:43	1/13/2008 14:17	13:34	13:34	Condenser tube leak
February	S	2/8/2008 13:30	2/10/2008 13:46	2/8/2008 13:30	2/10/2008 13:46	48:16	48:16	Condenser tube leak
	F			2/29/2008 4:03	—————>		19:57	Reheat boiler tube failure
March	F			—————>	3/1/2008 21:38		21:38	" " " "
	F			3/5/2008 8:28	3/6/2008 13:01		28:33	Steam seal header leak caused turbine vacuum trip
	F			3/21/2008 1:16	3/21/2008 8:52		7:36	Wet coal issues
April	F			4/29/2008 12:50	—————>		35:10	Reheater boiler tube failure

Louisville Gas & Electric Company
 Mill Creek Unit #2 - Coal - 301 MW
 November 2007 through April 2008

Schedule vs Actual

MONTH	MAINTENANCE				HOURS OF DURATION			REASON FOR DEVIATION FROM SCHEDULED MAINTENANCE OR REASON FOR FORCED OUTAGE AS APPROPRIATE
	Scheduled		Actual		Scheduled	Forced	Actual	
	FROM	TO	FROM	TO				
November	S	11/11/2007 15:00	11/19/2007 14:09	255:00	446:09		Biennial planned outage	
December		No Outages > or = 6 Hours						
January		No Outages > or = 6 Hours						
February	S	2/3/2008 1:19	2/5/2008 15:38	2/3/2008 1:19	2/5/2008 15:38	62:19	62:19	Air heater wash
March	F		3/7/2008 9:14	3/8/2008 8:32		23:18		Condenser tube leak
April	F		4/4/2008 23:09	4/5/2008 9:49		10:40		Wet coal issues

Louisville Gas & Electric Company
 Mill Creek Unit #3 - Coal - 391 MW
 November 2007 through April 2008

Schedule vs Actual

MONTH	MAINTENANCE				HOURS OF DURATION			REASON FOR DEVIATION FROM SCHEDULED MAINTENANCE OR REASON FOR FORCED OUTAGE AS APPROPRIATE
	Scheduled		Actual		Scheduled	Forced	Actual	
	FROM	TO	FROM	TO				
November	No Outages > or = 6 Hours							
December	F		12/2/2007 10:25	12/3/2007 22:47	36:22			Waterwall boiler tube failure
January	F		1/25/2008 11:29	1/27/2008 9:14	45:45			Reheater boiler tube failure
	F		1/30/2008 0:31	1/30/2008 23:40	23:09			Waterwall boiler tube failure
February	F		2/2/2008 16:17	2/2/2008 22:59	6:42			Condenser vacuum trip
	S	2/16/2008 0:00	2/24/2008 15:00	2/16/2008 2:23	2/25/2008 11:02	207:00	224:39	Single week planned outage between biennial outages
March	F		3/26/2008 16:17	3/28/2008 21:17	53:00			Waterwall boiler tube failure
April	S	4/25/2008 23:40	4/28/2008 0:20	4/25/2008 23:40	4/28/2008 0:20	48:40	48:40	Condenser tube leak

Schedule vs Actual

MONTH	MAINTENANCE				HOURS OF DURATION			REASON FOR DEVIATION FROM SCHEDULED MAINTENANCE OR REASON FOR FORCED OUTAGE AS APPROPRIATE
	Scheduled		Actual		Scheduled	Forced	Actual	
	FROM	TO	FROM	TO				
November	F		11/1/2007 2:11	11/1/2007 15:19	13:08		Induced draft fan - oil cooler leak	
	F		11/16/2007 18:43	11/19/2007 4:19	57:36		Boiler screen tube failure	
	F		11/23/2007 15:02	11/26/2007 3:42	60:40		Second superheater boiler tube failure	
December	S	12/8/2007 23:45	12/10/2007 7:09	12/8/2007 23:45	12/10/2007 7:09	31:24	31:24	Induced draft fan - oil cooler leak
	S	12/28/2007 23:44	12/31/2007 11:31	12/28/2007 23:44	12/31/2007 11:31	59:47	59:47	Air heater pluggage - clean
January	S	1/5/2008 23:23	1/6/2008 13:53	1/5/2008 23:23	1/6/2008 13:53	14:30	14:30	Steam packing exhausters - replace motors
February	F		2/9/2008 1:49	2/9/2008 22:33	20:44		Generator stator cooling water line crack	
	F		2/10/2008 1:16	2/10/2008 10:08	8:50		Generator trip - ground fault	
	F		2/18/2008 2:14	2/21/2008 14:46	84:32		Generator stator cooling water line crack	
March	F		3/1/2008 6:56	3/3/2008 9:18	50:22		Second superheater boiler tube failure	
	F		3/4/2008 11:56	3/5/2008 9:28	21:32		Generator stator cooling water line crack	
	F		3/6/2008 1:25	3/7/2008 1:51	24:26		Generator stator cooling water line crack	
	F		3/21/2008 20:41	3/23/2008 4:57	32:16		Second superheater boiler tube failure	
	S	3/29/2008 0:00	→	3/29/2008 0:14	→	72:00	71:46	Biennial planned outage (including replacement of second superheater boiler tubes)
April	S	→	4/27/2008 15:00	→	4/24/2008 14:13	639:00	566:13	" " " " " " " " " " " "

Louisville Gas & Electric Company
 Trimble County Unit #1 - Coal - 383 MW (75% ownership share of 511 MW)
 November 2007 through April 2008

Schedule vs Actual

MONTH	MAINTENANCE				HOURS OF DURATION			REASON FOR DEVIATION FROM SCHEDULED MAINTENANCE OR REASON FOR FORCED OUTAGE AS APPROPRIATE	
	Scheduled		Actual		Scheduled	Forced	Actual		
	FROM	TO	FROM	TO					
November	S	→	11/18/2007 15:00	→	11/17/2007 22:38	423:00		406:38	Biennial planned outage - and new DCS installed in outlying systems
	F			11/18/2007 4:00	11/18/2007 14:55		10:55		Failure in seal water piping on the condensate piping
	F			11/25/2007 3:26	11/26/2007 10:07		30:41		Waterwall boiler tube failure
	F			11/28/2007 21:07	11/30/2007 2:56		29:49		Superheat drain piping ruptured
December	S	12/8/2007 22:45	12/9/2007 19:48	12/8/2007 22:45	12/9/2007 19:48	21:03		21:03	Main stop valve drain valve leak
January	No Outages > or = 6 Hours								
February	No Outages > or = 6 Hours								
March	S	3/21/2008 12:19	3/24/2008 18:35	3/21/2008 12:19	3/24/2008 18:35	78:16		78:16	Superheater boiler tube failure
	F			3/24/2008 18:35	3/26/2008 1:18		30:43		Waterwall boiler tube failure
	F			3/26/2008 14:10	3/26/2008 22:00		7:50		Induced draft fan variable frequency drive had a short in leads to breaker
April	No Outages > or = 6 Hours								

Louisville Gas & Electric Company
 Cane Run Unit #11 - Gas CT - 14 MW
 November 2007 through April 2008

Schedule vs Actual

MONTH	MAINTENANCE				HOURS OF DURATION			REASON FOR DEVIATION FROM SCHEDULED MAINTENANCE OR REASON FOR FORCED OUTAGE AS APPROPRIATE
	Scheduled		Actual		Scheduled	Forced	Actual	
	FROM	TO	FROM	TO				
November	No Outages > or = 6 Hours							
December	No Outages > or = 6 Hours							
January	F		1/2/2008 12:40	1/3/2008 5:10	16:30			Instrument air piping froze due to inclement weather
February	No Outages > or = 6 Hours							
March	No Outages > or = 6 Hours							
April	F		4/4/2008 5:10	4/4/2008 13:33	8:23			Lightning - damaged fuses

Louisville Gas & Electric Company
 Paddys Run Unit #11 - Gas CT - 12 MW
 November 2007 through April 2008

Schedule vs Actual

MONTH	MAINTENANCE				HOURS OF DURATION			REASON FOR DEVIATION FROM SCHEDULED MAINTENANCE OR REASON FOR FORCED OUTAGE AS APPROPRIATE
	Scheduled		Actual		Scheduled	Forced	Actual	
	FROM	TO	FROM	TO				
November	No Outages > or = 6 Hours							
December	No Outages > or = 6 Hours							
January	No Outages > or = 6 Hours							
February	No Outages > or = 6 Hours							
March	No Outages > or = 6 Hours							
April	No Outages > or = 6 Hours							

Louisville Gas & Electric Company
 Paddys Run Unit #12 - Gas CT - 23 MW
 November 2007 through April 2008

Schedule vs Actual

MONTH	MAINTENANCE				HOURS OF DURATION			REASON FOR DEVIATION FROM SCHEDULED MAINTENANCE OR REASON FOR FORCED OUTAGE AS APPROPRIATE
	Scheduled		Actual		Scheduled	Forced	Actual	
	FROM	TO	FROM	TO				
November	MB	→	11/21/2007 9:22	→	11/21/2007 9:22	489:22	489:22	Unit was put in mothball status 11/22/06 @ 0:00 hours; unit returned to service on 11/21/07 @ 0922 hours.
	F			→	11/30/2007 9:00		15:00	Instrument air compressor
December	F			→			744:00	" " "
January	F			→	1/10/2008 11:23		227:23	" " "
February	No Outages > or = 6 Hours							
March	F			→	3/31/2008 8:00		16:00	Inspect and repair deepwell pump (water source for fire protection)
April	F			→	4/29/2008 5:15		677:15	" " " " " " " " " " "

Louisville Gas & Electric Company
 Paddys Run Unit # 13 - Gas CT - 158 MW
 November 2007 through April 2008

Schedule vs Actual

MONTH	MAINTENANCE				HOURS OF DURATION			REASON FOR DEVIATION FROM SCHEDULED MAINTENANCE OR REASON FOR FORCED OUTAGE AS APPROPRIATE
	Scheduled		Actual		Scheduled	Forced	Actual	
	FROM	TO	FROM	TO				
November	No Outages > or = 6 Hours							
December	No Outages > or = 6 Hours							
January	No Outages > or = 6 Hours							
February	No Outages > or = 6 Hours							
March	No Outages > or = 6 Hours							
April	S	4/12/2008 0:00	4/20/2008 15:00	4/14/2008 5:09	→ 207:00		402:51	Inspection of combustion chamber

Louisville Gas & Electric Company
 Trimble County Unit #5 - Gas CT - 160 MW
 November 2007 through April 2008

Schedule vs Actual

MONTH	MAINTENANCE				HOURS OF DURATION			REASON FOR DEVIATION FROM SCHEDULED MAINTENANCE OR REASON FOR FORCED OUTAGE AS APPROPRIATE
	Scheduled		Actual		Scheduled	Forced	Actual	
	FROM	TO	FROM	TO				
November	No Outages > or = 6 Hours							
December	S	12/1/2007 5:10	12/1/2007 23:45	12/1/2007 5:10	12/1/2007 23:45	18:35	18:35	Turbine borescope inspection and fuel gas valve repair
January	F			1/17/2008 7:15	1/17/2008 16:14	8:59		Solenoid failure on the hydraulic lift oil system of turbine
February	No Outages > or = 6 Hours							
March	No Outages > or = 6 Hours							
April	No Outages > or = 6 Hours							

Louisville Gas & Electric Company
 Trimble County Unit #6 - Gas CT - 160 MW
 November 2007 through April 2008

Schedule vs Actual

MONTH	MAINTENANCE				HOURS OF DURATION			REASON FOR DEVIATION FROM SCHEDULED MAINTENANCE OR REASON FOR FORCED OUTAGE AS APPROPRIATE
	Scheduled		Actual		Scheduled	Forced	Actual	
	FROM	TO	FROM	TO				
November	S	11/30/2007 6:10	→	11/30/2007 6:10	→	17:50	17:50	Turbine borescope inspection
December	S	→	12/1/2007 2:30	→	12/1/2007 2:30	2:30	2:30	" " "
	S	12/1/2007 5:10	12/1/2007 16:30	12/1/2007 5:10	12/1/2007 16:30	11:20	11:20	Fuel gas valve repair on TC5
January	No Outages > or = 6 Hours							
February	No Outages > or = 6 Hours							
March	No Outages > or = 6 Hours							
April	No Outages > or = 6 Hours							

Louisville Gas & Electric Company
 Trimble County Unit #7 - Gas CT - 160 MW
 November 2007 through April 2008

Schedule vs Actual

MONTH	MAINTENANCE				HOURS OF DURATION			REASON FOR DEVIATION FROM SCHEDULED MAINTENANCE OR REASON FOR FORCED OUTAGE AS APPROPRIATE	
	Scheduled		Actual		Scheduled	Forced	Actual		
	FROM	TO	FROM	TO					
November	S	11/29/2007 5:06	11/30/2007 0:30	11/29/2007 5:06	11/30/2007 0:30	19:24		19:24	Turbine borescope inspection
December	No Outages > or = 6 Hours								
January	F			1/2/2008 9:58	1/3/2008 4:10	18:12			Improper motor operated disconnect alignment on the center phase
	F			1/21/2008 9:40	1/21/2008 23:47	14:07			Exhaust load tunnel had crack which caused overheating
	S	1/22/2008 8:30	1/23/2008 17:38	1/22/2008 8:30	1/23/2008 17:38	33:08		33:08	Repair exhaust load tunnel
	F			1/25/2008 15:30	1/26/2008 14:13	22:43			Generator output breaker
February	No Outages > or = 6 Hours								
March	S	3/22/2008 0:00	→	3/27/2008 12:00	→	240:00		108:00	Combustion inspection
April	S	→	→	→	4/29/2008 9:27	720:00		681:27	" "

Louisville Gas & Electric Company
 Trimble County Unit #8 - Gas CT - 160 MW
 November 2007 through April 2008

Schedule vs Actual

MONTH	MAINTENANCE				HOURS OF DURATION			REASON FOR DEVIATION FROM SCHEDULED MAINTENANCE OR REASON FOR FORCED OUTAGE AS APPROPRIATE
	Scheduled		Actual		Scheduled	Forced	Actual	
	FROM	TO	FROM	TO				
November S	11/28/2007 0:00	11/29/2007 3:22	11/28/2007 0:00	11/29/2007 3:22	27:22		27:22	Turbine borescope inspection
December	No Outages > or = 6 Hours							
January	No Outages > or = 6 Hours							
February F			2/11/2008 18:30	2/12/2008 10:30		16:00		Fuel gas control valve
March	No Outages > or = 6 Hours							
April	No Outages > or = 6 Hours							

Louisville Gas & Electric Company
 Trimble County Unit #9 - Gas CT - 160 MW
 November 2007 through April 2008

Schedule vs Actual

MONTH	MAINTENANCE				HOURS OF DURATION			REASON FOR DEVIATION FROM SCHEDULED MAINTENANCE OR REASON FOR FORCED OUTAGE AS APPROPRIATE
	Scheduled		Actual		Scheduled	Forced	Actual	
	FROM	TO	FROM	TO				
November S	11/27/2007 6:30	11/28/2007 1:55	11/27/2007 6:30	11/28/2007 1:55	19:25		19:25	Turbine borescope inspection
December S	12/12/2007 6:30	12/12/2007 20:01	12/12/2007 6:30	12/12/2007 20:01	13:31		13:31	Starting system - switch needed to be replaced
January	No Outages > or = 6 Hours							
February	No Outages > or = 6 Hours							
March	No Outages > or = 6 Hours							
April	No Outages > or = 6 Hours							

Schedule vs Actual

MONTH	MAINTENANCE				HOURS OF DURATION			REASON FOR DEVIATION FROM SCHEDULED MAINTENANCE OR REASON FOR FORCED OUTAGE AS APPROPRIATE	
	Scheduled		Actual		Scheduled	Forced	Actual		
	FROM	TO	FROM	TO					
November	S	11/26/2007 9:30	11/27/2007 4:40	11/26/2007 9:30	11/27/2007 4:40	19:10		19:10	Turbine borescope inspection.
December	S	12/12/2007 6:30	12/13/2007 6:25	12/12/2007 6:30	12/13/2007 6:25	23:55		23:55	Starting system - switch needed to be replaced
January		No Outages > or = 6 Hours							
February	S	2/23/2008 3:15	2/27/2008 17:30	2/23/2008 3:15	2/27/2008 17:30	110:15		110:15	Combustion inspection
	S	2/27/2008 17:30	→	2/27/2008 17:30	→	54:30		54:30	Repairs as determined from combustion inspection
March	S	→	3/23/2008 15:00	→	3/26/2008 12:03	543:00		612:03	" " " " " " "
April	F			4/21/2008 18:20	4/24/2008 9:20			63:00	High turbine bearing vibration
	F			4/24/2008 9:36	→			158:24	" " " " "

Louisville Gas & Electric Company
 Zorn Unit #1 - Gas CT - 14 MW
 November 2007 through April 2007

Schedule vs Actual

MONTH	MAINTENANCE				HOURS OF DURATION			REASON FOR DEVIATION FROM SCHEDULED MAINTENANCE OR REASON FOR FORCED OUTAGE AS APPROPRIATE
	Scheduled		Actual		Scheduled	Forced	Actual	
	FROM	TO	FROM	TO				
November	F			11/10/2007 14:50	11/13/2007 9:22		66:32	Control air compressor
	S	11/27/2007 11:00	11/28/2007 11:30	11/27/2007 11:00	11/28/2007 11:30	24:30	24:30	Replaced instrument air compressor
December	S	12/11/2007 8:00	12/21/2007 12:50	12/11/2007 8:00	12/21/2007 12:50	244:50	244:50	Gas pipeline maintenance
January		No Outages > or = 6 Hours						
February		No Outages > or = 6 Hours						
March		No Outages > or = 6 Hours						
April		No Outages > or = 6 Hours						

LOUISVILLE GAS AND ELECTRIC COMPANY

**Response to Information Requested in Appendix A of
Commission's Order Dated August 22, 2008**

Case No. 2008-00286

Question No. 6

Witness: Caryl M. Pfeiffer

- Q-6. List all existing fuel contracts categorized as long-term (i.e., more than 1 year in length). Provide the following information for each contract:
- a. Supplier's name and address.
 - b. Name and location of production facility.
 - c. Date when contract was executed.
 - d. Duration of contract.
 - e. Date(s) of each contract revision, modification or amendment.
 - f. Annual tonnage requirements.
 - g. Actual annual tonnage received since the contract's inception.
 - h. Percent of annual requirements received during the contract's term.
 - i. Base price.
 - j. Total amount of price escalations to date.
 - k. Current price paid for coal under the contract (i + j).
- A-6. Please see the attached sheets.

A. NAME/ADDRESS:	Alliance Coal, LLC / LGE06010 1717 South Boulder Avenue Tulsa, Oklahoma 74119-4886
B. PRODUCTION FACILITY: OPERATOR	Hopkins County Coal, Warrior Coal, LLC and Webster County Coal, LLC
MINE LOCATION	Seller's Mines Western Kentucky
C. CONTRACT EXECUTED DATE:	December 16, 2005
D. CONTRACT DURATION:	January 1, 2006 - December 31, 2011
E. CONTRACT AMENDMENTS:	Amendment No. 1 effective September 6, 2006, amending payment terms Amendment No. 2 effective January 1, 2007 detailing shipping method for tonnage Amendment No. 3 effective March 1, 2007 amending payment calculations Amendment No. 4 effective January 1, 2008 amending pricing
F. ANNUAL TONNAGE REQUIREMENTS:	2006 Up to 3,500,000 tons (Total with Synfuel Solutions Operating Contract) 2007 Up to 4,000,000 tons (Total with Synfuel Solutions Operating Contract) 2008 through 2011 - 4,000,000 tons per year
G. ACTUAL TONNAGE RECEIVED:	2006 3,472,671 tons 2007 4,021,560 tons 2008 1,300,225 tons (through 4/30/08)
H. PERCENT OF ANNUAL REQUIREMENTS:	2006 99.2 % 2007 100.5% 2008 32.5% (through 4/30/08) Contract (Synfuel Solutions Operating, see page 3 of 17)
I. BASE PRICE:	2006 Delivery Option 1 - \$1.348/MMBtu Delivery Option 2 - \$1.411/MMBtu Delivery Option 3 - \$1.424/MMBtu 2007 Delivery Option 1 - \$32.09 per ton Delivery Option 2 - \$32.48 per ton Delivery Option 3 - \$33.50 per ton

2008 Delivery Option 1 - \$32.24 per ton
Delivery Option 2 - \$32.51 per ton
Delivery Option 3 - \$33.33 per ton

2009 Pricing for remaining 2.0 Million tons:
Delivery Option 1 - \$32.14 per ton
Delivery Option 2 - \$32.66 per ton
Delivery Option 3 - \$33.28 per ton

2009 Pricing for remaining 2.0 Million tons:
To Be Negotiated

2010 To Be Negotiated

2011 To Be Negotiated

J. ESCALATIONS TO DATE:

None

K. CURRENT CONTRACT PRICE:

Delivery Option 1 - \$32.24 per ton
Delivery Option 2 - \$32.51 per ton
Delivery Option 3 - \$33.33 per ton

A. NAME/ADDRESS: Armstrong Coal Company, Inc / J07032
407 Brown Road
Madisonville, Kentucky 42431

B. PRODUCTION FACILITY:
OPERATOR Armstrong Coal Company, Inc
MINES Various
LOCATION Muhlenberg County and Ohio County,
Kentucky

C. CONTRACT EXECUTED DATE: December 20, 2007

D. CONTRACT DURATION: January 1, 2008 - December 31, 2015

E. CONTRACT AMENDMENTS: None

F. ANNUAL TONNAGE REQUIREMENTS: 2008 600,000 tons
2009 2,500,000 tons
2010 through 2015: 4,000,000 tons per year

G. ACTUAL TONNAGE RECEIVED: 2008 Deliveries scheduled to start July

H. PERCENT OF ANNUAL REQUIREMENTS: 2008 Deliveries scheduled to start July

I. BASE PRICE (FOB Barge)

2008	Quality 1 - \$27.31 per ton
	Quality 2 - \$28.30 per ton
2009	Quality 1 - \$27.60 per ton
	Quality 2 - \$28.76 per ton
2010	Quality 1 - \$28.21 per ton
	Quality 2 - \$29.63 per ton
2011	Quality 1 - \$28.36 per ton
	Quality 2 - \$29.78 per ton
2012	Quality 1 - \$28.51 per ton
	Quality 2 - \$29.93 per ton
2013	Quality 1 - \$28.66 per ton
	Quality 2 - \$30.08 per ton
2014	Quality 1 - \$28.81 per ton
	Quality 2 - \$30.23 per ton
2015	Quality 1 - \$28.96 per ton
	Quality 2 - \$30.38 per ton

J. ESCALATIONS TO DATE:

None

I. CURRENT CONTRACT PRICE:

Quality 1 - \$27.31 per ton

Quality 2 - \$28.30 per ton

A. NAME/ADDRESS: Charolais Coal, No. 1, LLC / J07003
Highway 862, P.O. Box 1999
Madisonville, Kentucky 42431

B. PRODUCTION FACILITY:
OPERATOR Charolais Coal, No. 1, LLC
MINES Vogue West and Rock Crusher Mines
LOCATION Muhlenberg County, Kentucky

MINES Sacramento Mine
LOCATION McLean County, Kentucky

C. CONTRACT EXECUTED DATE: December 21, 2006

D. CONTRACT DURATION: January 1, 2007 - December 31, 2010

E. CONTRACT AMENDMENTS: None

F. ANNUAL TONNAGE REQUIREMENTS:

2007	300,000 tons
2008	350,000 tons
2009	600,000 tons
2010	500,000 tons

G. ACTUAL TONNAGE RECEIVED:

2007	240,183 tons
2008	15,372 tons (through 4/30/08)

H. PERCENT OF ANNUAL REQUIREMENTS:

2007	80.0%
2008	4.4% (through 4/30/08)

I. BASE PRICE (FOB Barge)

2007	\$32.20 per ton
2008	\$32.75 per ton
2009	\$34.10 per ton
2010	\$36.10 per ton

J. ESCALATIONS TO DATE: None

I. CURRENT CONTRACT PRICE: \$32.75 per ton

A. NAME/ADDRESS:	Consol Energy / Contract No. LGE05012 1800 Washington Road Pittsburgh, Pennsylvania 15241
B. PRODUCTION FACILITY: OPERATOR MINE LOCATION	Consolidated Coal Company McElroy and Shoemaker Marshall County, West Virginia
C. CONTRACT EXECUTED DATE:	December 21, 2004
D. CONTRACT DURATION:	January 1, 2005 - December 31, 2008
E. CONTRACT AMENDMENTS:	Amendment No. 1 effective July 14, 2006 amending payment terms Amendment No. 2 effective March 1, 2007 amending payment calculations
F. ANNUAL TONNAGE REQUIREMENTS:	2005 841,500 tons (Reflects force majeure tonnage of 33,500 tons) 2006 875,000 tons 2007 1,000,000 tons 2008 1,000,000 tons
G. ACTUAL TONNAGE RECEIVED:	2005 893,663 tons 2006 981,344 tons 2007 852,198 tons 2008 130,118 tons (through 4/30/08)
H. PERCENT OF ANNUAL REQUIREMENTS	2005 106.2% 2006 112.2% 2007 85.2% 2008 13.0% (through 4/30/08)
I. BASE PRICE (FOB Barge):	<u>Quality A</u> 2005 \$1.21926/MMBtu 2006 \$1.24385/MMBtu 2007 \$32.218 per ton 2008 \$32.838 per ton

<u>Quality B</u>	
2005	\$1.19877/MMBtu
2006	\$1.22295/MMBtu
2007	\$31.698 per ton
2008	\$32.308 per ton

J. ESCALATIONS TO DATE: None

K. CURRENT CONTRACT PRICE: Quality A \$32.838 per ton
Quality B \$33.308 per ton

A. NAME/ADDRESS: Marietta Coal Company / LGE05010
629220 Georgetown Road
Cambridge, Ohio 43725

B. PRODUCTION FACILITY:
OPERATOR Marietta Coal Company
MINE Belmont Mine
LOCATION Belmont and Jefferson Counties, Ohio

MINE West Virginia Strip Mine
LOCATION Ohio County, West Virginia

C. CONTRACT EXECUTED DATE: November 15, 2004

D. CONTRACT DURATION: October 1, 2004 – December 31, 2008

E. CONTRACT AMENDMENTS: Amendment No. 1 effective June 15, 2005
amending quality and price for two months
Amendment No. 2 effective September 1,
2006 amending payment terms
Amendment No. 3 effective March 1, 2007
amending payment calculations

F. ANNUAL TONNAGE REQUIREMENTS:

2004	30,000 tons
2005	200,000 tons
2006	100,000 tons
2007	150,000 tons
2008	150,000 tons

G. ACTUAL TONNAGE RECEIVED:

2004	13,235 tons
2005	104,512 tons
2006	198,757 tons
2007	146,281 tons
2008	14,720 tons (through 4/30/08)

H. PERCENT OF ANNUAL REQUIREMENTS:

2004	44.1%
2005	52.3%
2006	54.4% (includes 2005 carryover)
2007	97.5% (includes 2006 carryover)
2008	9.8% (through 4/30/08)

I. BASE PRICE (FOB Barge):	2004	\$1.194/MMBtu
	2005	\$1.194/MMBtu
	2006	\$27.25 per ton
	2007	\$27.75 per ton
	2008	\$28.25 per ton

J. ESCALATIONS TO DATE:	None
-------------------------	------

K. CURRENT CONTRACT PRICE:	\$27.75 per ton
----------------------------	-----------------

A. NAME/ADDRESS: Peabody COALSALES / LGE06012
701 Market Street, Suite 830
St. Louis, Missouri 63101-1826

B. PRODUCTION FACILITY:

OPERATOR	Patriot Coal and Ohio County Coal
MINE	Patriot and Freedom Mines
LOCATION	Henderson County, Kentucky
OPERATOR	Black Beauty Coal Company
MINE	Somerville Mine
LOCATION	Gibson County, Indiana

C. CONTRACT EXECUTED DATE: May 23, 2006

D. CONTRACT DURATION: April 1, 2006 - December 31, 2008

E. CONTRACT AMENDMENTS: Amendment No. 1 effective September 7, 2006 amending payment terms
Amendment No. 2 effective November 20, 2006 adding coal synfuel
Amendment No. 3 effective March 1, 2007 amending payment calculations
Amendment No. 4 effective July 1, 2007 amending base quantity
Amendment No. 5 effective January 1, 2008 amending term and base quantity

F. ANNUAL TONNAGE REQUIREMENTS:

2006	937,500 tons (Total with Synthetic Fuel Enterprises Contract)
2007	1,700,000 tons (Total with Synthetic Fuel Enterprises Contract)
2008	1,000,000 tons
2009	750,000 tons

G. ACTUAL TONNAGE RECEIVED:

2006	967,210 tons
2007	1,770,880 tons (See page 13 of 17)
2008	370,501 tons (through 4/30/08)

H. PERCENT OF ANNUAL REQUIREMENTS:

2006	103.2.5%
2007	104.2% (See page 13 of 17)
2008	37.1% (through 4/30/08)

I. BASE PRICE (FOB Barge):	2006	\$1.38/MMBtu – Quality A Barge \$1.273/MMBtu – Quality B Rail \$1.38/MMBtu – Quality B Barge
	2007	\$30.60 per ton – Quality A Barge \$28.60 per ton – Quality B Rail \$31.02 per ton – Quality B Barge
	2008	\$29.26 per ton - Rail \$31.60 per ton – Barge
	2009	\$32.75 - Barge
J. ESCALATIONS TO DATE:		None
K. CURRENT CONTRACT PRICE:		\$29.26 per ton – Rail \$31.60 per ton – Barge

LOUISVILLE GAS and ELECTRIC COMPANY

Peabody COALSALES – LGE06012 / Synthetic American Fuel Enterprises – J07005

<u>Month</u>	<u>Total Tons Received</u>	<u>Coal Tons Received</u>	<u>Synfuel Tons Received</u>
Jan 2006	0	0	0
Feb	0	0	0
Mar	0	0	0
Apr	76,984	76,984	0
May	100,300	100,300	0
Jun	109,962	109,962	0
Jul	101,033	101,033	0
Aug	113,886	113,886	0
Sep	94,660	94,660	0
Oct	117,581	117,581	0
Nov	126,401	119,638	6,763
Dec	126,403	59,002	67,401
Year 2006	967,210	893,046	74,164
Jan 2007	132,639	54,017	78,622
Feb	131,569	60,025	71,544
Mar	180,531	111,574	68,957
Apr	151,439	71,422	80,017
May	168,078	88,310	79,768
Jun	155,379	77,902	77,477
Jul	157,573	78,069	79,504
Aug	159,530	93,299	66,231
Sep	131,432	58,829	72,603
Oct	166,912	82,540	84,372
Nov	121,665	82,607	39,058
Dec	114,133	114,133	0
Year 2007	1,770,880	972,727	798,153
Jan 2008	93,277	93,277	0
Feb	77,119	77,119	0
Mar	95,423	95,423	0
Apr	104,681	104,681	0
Year 2008 ytd	370,500	370,500	0

I. BASE PRICE:	2006	\$1.223/MMBtu – FOB Railcar
	2006	\$1.330/MMBtu – FOB Barge
	2007	\$1.250/MMBtu – FOB Railcar
	2007	\$1.360/MMBtu – FOB Barge
J. ESCALATIONS TO DATE:	None	
K. CURRENT CONTRACT PRICE:	Synfuel option no longer available	

A. NAME/ADDRESS: Sands Hill Coal Company / L07004
38701 State Road 160
Hamden, Ohio 45634

B. PRODUCTION FACILITY:
OPERATOR Sands Hill Coal Company
MINE Sands Hill Mine
LOCATION Jackson and Vinton Counties, Ohio

C. CONTRACT EXECUTED DATE: January 2, 2007

D. CONTRACT DURATION: January 1, 2007 – December 31, 2008

E. CONTRACT AMENDMENTS:

F. ANNUAL TONNAGE REQUIREMENTS:

2007	72,000 tons
2008	90,000 tons

G. ACTUAL TONNAGE RECEIVED:

2007	85,937 tons
2008	0 tons (through 4/30/08)

H. PERCENT OF ANNUAL REQUIREMENTS:

2007	119.4%
2008	0.0% (through 4/30/08)

I. BASE PRICE (FOB Barge):

2007	\$34.50 per ton
2008	\$35.50 per ton

J. ESCALATIONS TO DATE: \$2.80

K. CURRENT CONTRACT PRICE: \$38.30 per ton

A. NAME/ADDRESS: Smoky Mountain Coal Corp. / LGE02013
9725 Cogdill Road, Suite 203
Knoxville, Tennessee 42413

B. PRODUCTION FACILITY:

OPERATOR	KMMC Mining
MINE	Vision #9
LOCATION	Webster County, Kentucky

OPERATOR	Allied Reserves, Inc.
MINE	Onton Reserve
LOCATION	Webster County, Kentucky

C. CONTRACT EXECUTED DATE: February 27, 2002

D. CONTRACT DURATION: January 1, 2002 - December 31, 2008

E. CONTRACT AMENDMENTS: Amendment No. 1 effective January 1, 2004
amending term, quantity, quality, and price.
Amendment No. 2 effective January 1, 2006
amending term, base quantity price and
quality
Amendment No. 3 effective September 1,
2006 amending payment terms
Amendment No. 4 effective January 1, 2007
amending term, quantity, quality, and price.
Amendment No. 5 effective March 1, 2007
amending payment calculation

F. ANNUAL TONNAGE REQUIREMENTS:

2002	200,000 tons
2003	250,000 tons
2004	300,000 tons
2005	350,000 tons
2006	600,000 tons
2007	425,000 tons
2008	475,000 tons
2009	200,000 tons

G. ACTUAL TONNAGE RECEIVED:

2002	332,115 tons
2003	275,535 tons
2004	314,929 tons
2005	357,881 tons
2006	600,628 tons
2007	517,857 tons
2008	83,097 tons (through 4/30/08)

H. PERCENT OF ANNUAL REQUIREMENTS:	2002	166.1%
	2003	110.2%
	2004	105.0%
	2005	102.3%
	2006	100.1%
	2007	121.8%
	2008	17.5% (through 4/30/08)

I. BASE PRICE (FOB Barge):	<u>Quality A</u>	
	2002 / 2003	\$1.154/MMBtu
	2004	\$1.194/MMBtu

	<u>Quality B</u>	
	2002 / 2003	\$1.123/MMBtu
	2004	\$1.161/MMBtu

	<u>Quality C</u>	
	2004	\$1.02/MMBtu
	2005	\$1.06/MMBtu
	2006	\$1.261/MMBtu
	2007	\$30.22 per ton
	2008	\$31.00 per ton
	2009	\$35.95 per ton

	<u>Quality D</u>	
	2004	\$.995/MMBtu
	2005	\$1.03/MMBtu
	2006	\$1.241/MMBtu
	2007	\$29.24 per ton
	2008	\$30.01 per ton
	2009	34.87 per ton

J. ESCALATIONS TO DATE: None

K. CURRENT CONTRACT PRICE: Quality C
\$31.00 per ton

Quality D
\$30.01 per ton

LOUISVILLE GAS AND ELECTRIC COMPANY

**Response to Information Requested in Appendix A of
Commission's Order Dated August 22, 2008**

Case No. 2008-00286

Question No. 7

Witness: Caryl M. Pfeiffer

- Q-7. a. Does LG&E regularly compare the price of its coal purchases with those paid by other electric utilities?
- b. If yes, state:
- (1) How LG&E's prices compare with those of other utilities for the review period.
- (2) The utilities that are included in this comparison and their location.
- A-7. a. Yes.
- b. Please see the attached sheet.

UTILITY	MAR 07 – FEB 08 ¢/MMBTU	PLANT LOCATIONS
AmerenEnergy Generating Co	151.49	Illinois
AmerenEnergy Resources Generating Co	138.98	Illinois
Appalachian Power Co	188.53	Virginia, West Virginia
Cardinal Operating (AEP)	174.18	Ohio
Columbus Southern Power Co	173.03	Kentucky, Ohio
Dayton Power & Light Co	191.11	Ohio
Duke Energy Indiana	152.87	Indiana
Duke Energy Ohio	166.05	Ohio
East Kentucky Power Coop	213.61	Kentucky
Electric Energy Inc	104.06	Illinois
Hoosier Energy Rural Electric Coop Inc	128.93	Indiana
Indiana Kentucky Electric Corp	176.08	Indiana
Indiana Michigan Power Co	191.48	Indiana
Indianapolis Power & Light	125.98	Indiana
Kentucky Power Co	199.59	Kentucky
Kentucky Utilities Co	216.18	Kentucky
Louisville Gas & Electric Co	156.36	Kentucky
Monongahela Power Co	200.79	West Virginia
Northern Indiana Public Service Co	186.70	Indiana
Ohio Power Co	151.02	Ohio, West Virginia
Ohio Valley Electric Corp	191.34	Ohio
Owensboro Municipal Utilities	113.87	Kentucky
Southern Indiana Gas & Electric Co	173.94	Indiana
Tennessee Valley Authority	186.60	Alabama, Kentucky, Tennessee

Louisville Gas and Electric ranked 9th for the 12 month period.

LOUISVILLE GAS AND ELECTRIC COMPANY

**Response to Information Requested in Appendix A of
Commission's Order Dated August 22, 2008**

Case No. 2008-00286

Question No. 8

Witness: Caryl M. Pfeiffer

Q-8. State the percentage of LG&E's coal, as of the date of this Order, that is delivered by:

- a. rail.
- b. truck.
- c. barge.

A-8. a. rail - 54.8%
b. truck - 0.0%
c. barge - 45.2%

LOUISVILLE GAS AND ELECTRIC COMPANY

**Response to Information Requested in Appendix A of
Commission's Order Dated August 22, 2008**

Case No. 2008-00286

Question No. 9

Witness: Caryl M. Pfeiffer

- Q-9. a. State LG&E's coal inventory level in tons and in number of days' supply as of April 30, 2008.
- b. Describe the criteria used to determine number of days' supply.
- c. Compare LG&E's coal inventory as of April 30, 2008 to its inventory target for that date.
- d. If actual coal inventory exceeds inventory target by 10 days' supply, state the reasons for excessive inventory.
- e. (1) Does LG&E expect any significant changes in its current coal inventory target within the next 12 months?
- (2) If yes, state the expected change and the reasons for this change.

A-9. a. As of April 30, 2008: 919,156 tons; 42 days

b. PSC Formula

$$\text{Days Burn} = \frac{\text{Current inventory tons}}{\text{Preceding 12 months' burn (tons)}} \times 365 \text{ Days}$$

- c. Target: 35-50 Days
- d. The actual coal inventory does not exceed the inventory target by 10 days.
- e. (1) No.
- (2) Not applicable.

LOUISVILLE GAS AND ELECTRIC COMPANY

**Response to Information Requested in Appendix A of
Commission's Order Dated August 22, 2008**

Case No. 2008-00286

Question No. 10

Witness: Caryl M. Pfeiffer

- Q-10. a. Has LG&E audited any of its coal contracts during the period from November 1, 2007 through April 30, 2008?
- b. If yes, for each audited contract:
- (1) Identify the contract.
 - (2) Identify the auditor.
 - (3) State the results of the audit.
 - (4) Describe the actions that LG&E took as a result of the audit.
- A-10. a. No. LG&E has not conducted any financial audits of coal companies. LG&E's current coal contracts are fixed price. In the case of coal delivered by truck to a barge loading dock, a portion of the base contract price is adjusted using government published indices to reflect the changes in the cost of diesel fuel. These agreements thus do not require audits. LG&E's Manager Fuels Technical Services or Mining Engineer does conduct scheduled on-site reviews and inspections of the mining operations and sampling systems of each vendor up to twice a year and may conduct unscheduled visits. Additionally, LG&E employees may visit a vendor as needed to address problems and issues at any time.

Coal mine safety regulations were imposed by the Federal Mine Safety and Health Administration. The U. S. Congress passed the Mine Improvement and New Emergency Response Act of 2006 ("Miner Act"), which became law on June 15, 2006. For claims made under the Miner Act, LG&E has hired Weir International, Inc. (a consultant with experience in the mining industry) to review and independently assess such claims.

CONSOL Energy, in accordance with the provisions of Section 8.4 New Imposition in Agreement LG&E-05039, requested a Base Price increase of \$0.708 per ton effective January 1, 2007. Based on Weir's report dated June 17, 2008, Consol and LG&E agreed on the amounts of \$0.287 per ton for year 2007 and \$0.266 per ton for year 2008. The Weir June 17, 2008 report contains confidential and proprietary information and a copy is being filed with the Commission under seal pursuant to a Petition for Confidential Treatment.

Smoky Mountain Coal, in accordance with the provisions of Section 8.3 New Imposition in Agreement LG&E02013, requested a price increase of \$0.587 per ton for the 18 month period ending June 30, 2007. Based on Weir's report dated May 21, 2008, Smoky Mountain and LG&E agreed on the amount of \$0.537 per ton for the period ending June 30, 2007. The Weir May 27, 2008 report contains confidential and proprietary information and a copy is being filed with the Commission under seal pursuant to a Petition for Confidential Treatment.

Smoky Mountain Coal, in accordance with the provisions of Section 8.3 New Imposition in Agreement LG&E02013, requested a price increase of \$1.48 per ton for the period July 1, 2007 – May 31, 2008. Weir is reviewing the claim for this period.

Alliance Coal, in accordance with the provisions of Section 8.3 Governmental Impositions in Agreement LG&E06010, has requested a price increase of \$0.15 per ton for all contract tonnage shipped in 2006 and \$0.39 per ton for 2007 which applies only to 2.0 million tons shipped in 2007 which are not subject to price reopener pursuant to Section 8.1(b) of the Agreement. Weir is reviewing the claim.

b. Not applicable.

LOUISVILLE GAS AND ELECTRIC COMPANY

**Response to Information Requested in Appendix A of
Commission's Order Dated August 22, 2008**

Case No. 2008-00286

Question No. 11

Witness: Robert M. Conroy

- Q-11. a. Has LG&E received any customer complaints regarding its FAC during the period from November 1, 2007 through April 30,2008?
- b. If yes, for each complaint, state:
- (1) The nature of the complaint.
 - (2) LG&E's response.
- A-11. a. No.
- b. Not applicable.

LOUISVILLE GAS AND ELECTRIC COMPANY

Response to Information Requested in Appendix A of
Commission's Order Dated August 22, 2008

Case No. 2008-00286

Question No. 12

Witness: Caryl M. Pfeiffer

- Q-12. a. Is LG&E currently involved in any litigation with its current or former coal suppliers?
- b. If yes, for each litigation:
- (1) Identify the coal supplier.
 - (2) Identify the coal contract involved.
 - (3) State the potential liability or recovery to LG&E.
 - (4) List the issues presented.
 - (5) Provide a copy of the complaint or other legal pleading that initiated the litigation and any answer(s) or counterclaim(s). If a copy has previously been filed with the Commission, provide the date on which *it* was filed and the case in which it was filed.
- c. State the current status of all litigation with coal suppliers.

A-12. a. Yes

b. **Coal Supply Agreement – Kindill Mining**

- (1) Kindill Mining: Kindill Mining (an affiliate of Horizon Natural Resources successor of AEI Coal Sales Company, Inc.) filed for Chapter 11 bankruptcy protection on August 25, 2003, LG&E filed a Proof of Claim on October 18, 2004.
- (2) Coal Supply Agreement LG&E 97-211-026 dated July 1, 1997.
- (3) LG&E seeks to recover cover damages sustained by LG&E arising from the rejection of the Contract.

- (4) The Contract was rejected by the Debtor pursuant to an Order rejecting certain executory contracts entered on September 30, 2004.
 - (5) A copy of the Proof of Claim filed in the United States Bankruptcy Court in the Eastern District of Kentucky was filed with the Commission as part of the hearing to Case No. 2004-00466.
- c. A liquidating plan was approved and the claims process is ongoing.

February 6, 2008 LG&E received check no. 114983 for \$33,657.93 for HNR liquidating trust first distribution. The amount was credited against coal purchase expense for Cane Run Station.

LOUISVILLE GAS AND ELECTRIC COMPANY

**Response to Information Requested in Appendix A of
Commission's Order Dated August 22, 2008**

Case No. 2008-00286

Question No. 13

Witness: Caryl M. Pfeiffer

Q-13. a. During the period from November 1, 2007 through April 30, 2008, have there been any changes to LG&E's written policies and procedures regarding its fuel procurement?

b. If yes:

(1) Describe the changes.

(2) Provide these written policies and procedures as changes.

(3) State the date the changes were made.

(4) Explain why the changes were made.

A-13. a. No change.

b. Not applicable.

LOUISVILLE GAS AND ELECTRIC COMPANY

**Response to Information Requested in Appendix A of
Commission's Order Dated August 22, 2008**

Case No. 2008-00286

Question No. 14

Witness: Caryl M. Pfeiffer

- Q-14. a. Is LG&E aware of any violations of its policies and procedures regarding fuel procurement that occurred prior to or during the period from November 1, 2007 through April 30, 2008?
- b. If yes, for each violation:
- (1) Describe the violation.
 - (2) Describe the action(s) that LG&E took upon discovering the violation.
 - (3) Identify the person(s) who committed the violation.
- A-14. a. No.
- b. Not applicable

LOUISVILLE GAS AND ELECTRIC COMPANY

**Response to Information Requested in Appendix A of
Commission's Order Dated August 22, 2008**

Case No. 2008-00286

Question No. 15

Witness: Caryl M. Pfeiffer

Q-15. Identify and explain the reasons for all changes that occurred during the period from November 1, 2007 through April 30, 2008 in the organizational structure and personnel of the departments or divisions that are responsible for LG&E's fuel procurement activities.

A-15. The following changes occurred in the Fuels Department during the period under review.

Mark McAdams left the company on December 31, 2007 to become the Director of Fuels for Big Rivers Electric Cooperative.

Delbert Billiter, Manager Fuels Technical Services, was temporarily assigned to the position of Manager Fuels WKE to replace Mark McAdams.

Tom Axtell, mining Engineer, was temporarily assigned as a direct report to Director, Corporate Fuels due to Delbert Billiter being temporarily assigned to WKE.

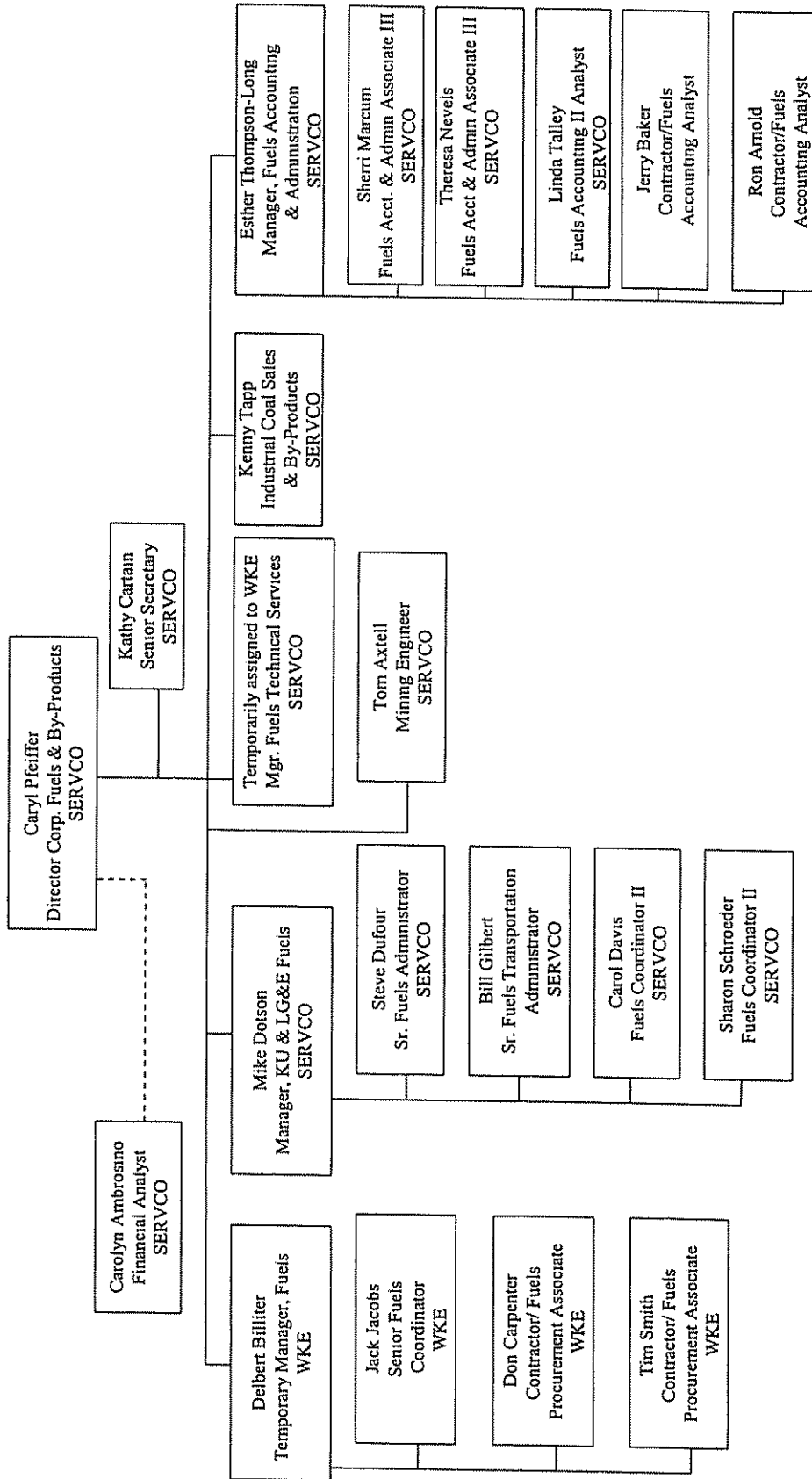
Don Carpenter left the company on December 21, 2007 as Fuels Procurement Associate for WKE.

Tim Smith was hired as a full time temporary employee to replace Don Carpenter as Fuels Procurement Associate for WKE on December 10, 2007. Tim Smith left the Fuels Department to become a full time employee as Manager, Commercial Operations at the Ghent Station effective June 2, 2008.

Don Carpenter was rehired as a full time temporary employee as Fuels Procurement Associate for WKE on April 21, 2008.

Please see the attached organizational chart.

Corporate Fuels and By-Products
April 30, 2008



LOUISVILLE GAS AND ELECTRIC COMPANY

**Response to Information Requested in Appendix A of
Commission's Order Dated August 22, 2008**

Case No. 2008-00286

Question No. 16

Witness: Ralph Bowling

- Q-16. a. Identify all changes that LG&E has made during the period under review to its maintenance and operation practices that also affect fuel usage at LG&E's generation facilities.
- b. Describe the impact of these changes on LG&E's fuel usage.
- A-16. a. None.
- b. Not applicable.

LOUISVILLE GAS AND ELECTRIC COMPANY

**Response to Information Requested in Appendix A of
Commission's Order Dated August 22, 2008**

Case No. 2008-00286

Question No. 17

Witness: Caryl M. Pfeiffer

Q-17. List each written coal supply solicitation issued during the period from November 1, 2007 through April 30, 2008.

- a. For each solicitation, provide the date of the solicitation, the type of solicitation (contract or spot), the quantities solicited, a general description of the quality of coal solicited, the time period over which deliveries were requested, and the generating unit(s) for which the coal was intended.
- b. For each solicitation, state the number of vendors to whom the solicitation was sent, the number of vendors who responded, and the selected vendor. Provide the bid tabulation sheet or corresponding document that ranked the proposals. (This document should identify all vendors who made offers.) State the reasons for each selection.

- A-17. a. Date: January 24, 2008
Contract/Spot: Contract and Spot
Quantities: No minimum or maximum specified
Quality: Suitable for LG&E power plants, KU's Ghent power plant and KU's E.W. Brown power plant (beginning mid-year 2009)
Period: Up to ten years
Generating Units: All LG&E coal fired units, KU's Ghent power plant and KU's E.W. Brown power plant (beginning mid-year 2009)
- b. Number of vendors receiving bids: 169
Number of vendor responses: 19
Selected vendors: The final selection of the vendors has not been made at this time. Negotiations are still in progress. The names of the selected vendors and the supporting bid tabulation sheet will be provided to the Commission after the negotiations are complete and the vendors are chosen.

LOUISVILLE GAS AND ELECTRIC COMPANY

**Response to Information Requested in Appendix A of
Commission's Order Dated August 22, 2008**

Case No. 2008-00286

Question No. 18

Witness: Caryl M. Pfeiffer

Q-18. List each oral coal supply solicitation issued during the period from November 1, 2007 through April 30, 2008.

- a. For each solicitation, state why the solicitation was not written, the date(s) of the solicitation, the quantities solicited, a general description of the quality of coal solicited, the time period over which deliveries were requested, and the generating unit(s) for which the coal was intended.
- b. For each solicitation, identify all vendors solicited and the vendor selected. Provide the tabulation sheet or other document that ranks the proposals. (This document should identify all vendors who made offers.) State the reasons for each selection.

A-18. a. None.

b. Not applicable.

LOUISVILLE GAS AND ELECTRIC COMPANY

**Response to Information Requested in Appendix A of
Commission's Order Dated August 22, 2008**

Case No. 2008-00286

Question No. 19

Witness: Robert M. Conroy

- Q-19. a. List all intersystem sales during the period under review in which LG&E used a third party's transmission system.
- b. For each sale listed above:
- (1) Describe how LG&E addressed for FAC reporting purposes the cost of fuel expended to cover any line losses incurred to transmit its power across the third party's transmission system.
- (2) State the line loss factor used for each transaction and describe how that line loss factor was determined.
- A-19. a. There were no intersystem sales during the period under review in which LG&E used a third party's transmission system.
- b. Not applicable.

LOUISVILLE GAS AND ELECTRIC COMPANY

**Response to Information Requested in Appendix A of
Commission's Order Dated August 22, 2008**

Case No. 2008-00286

Question No. 20

Witness: Robert M. Conroy

- Q-20. Describe each change that LG&E made during the period under review to its methodology for calculating intersystem sales line losses.
- A-20. There have been no changes. LG&E continues to use a line loss factor of one percent to determine the cost of fuel associated with line losses incurred to make an intersystem sale and recovered from such sale consistent with the Commission's December 2, 1999 Order in Case No. 96-524-A, 96-524-B, 96-524-C, and the March 25, 2003 Order in Case No. 2002-00225.

LOUISVILLE GAS AND ELECTRIC COMPANY

**Response to Information Requested in Appendix A of
Commission's Order Dated August 22, 2008**

Case No. 2008-00286

Question No. 21

Witness: Caryl M. Pfeiffer

- Q-21. a. Provide the number of LG&E's coal purchase contracts which included transportation costs and those that did not during the period November 1, 2007 through April 30, 2008.
- b. Does LG&E use or contract with any related parties for transportation of its coal purchases? If yes, provide the name of the related party and nature of the relationship, the period of time it has contracted with the party and copies of any contracts with the related party if not previously filed with the Commission.
- A-21. a. None of LG&E's coal purchase contracts include transportation.
- b. No.